

EuroLite

Steel Doors & Windows

ET68-AC-XO ET68 EXTERIOR AWNING WINDOW COMBO

Locking: Casement Latch
Operation: Rotary Handle Operator
Hinges: Welded

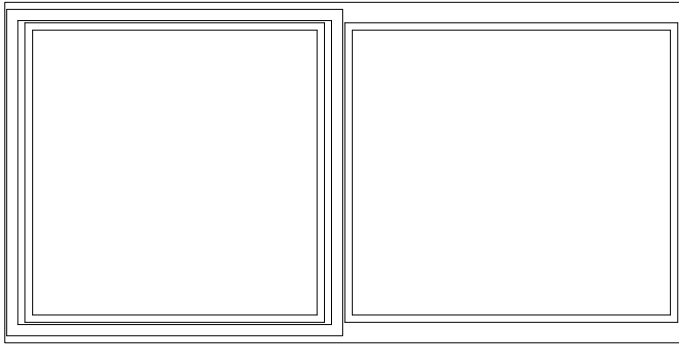
Climate Proofing:
Integral Thermal Break
Dual Thermal Seals
Dual Air Seals

Glazing:
Dual/Triple pane Krypton Gas Filled
Integral Noise Control Included
Low E Options Available
Fully Tempered
Spacer, Black
Factory Installed Wet Glazing w Steel Stop
1/2" and 1" Muntins Available - FDL

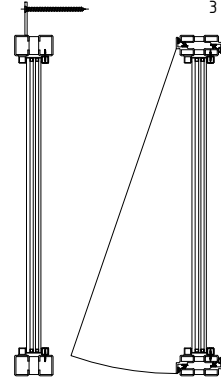
Frame:
Depth: 68 mm
Attachment: Nail Fin (optional)

Finish:
Thermally Bonded Zinc Galvanized
2 Coats Epoxy Primer
3 Coats Acrylic Lacquer
3 Coats Clear Polyurethane

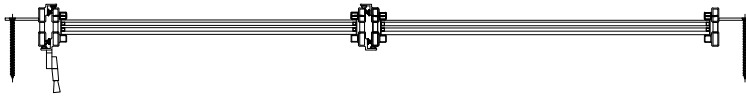
* MUNTINS ARE OPTIONAL



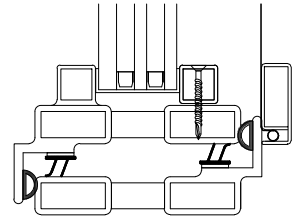
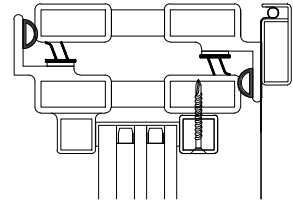
FRONT VIEW FROM OUTSIDE



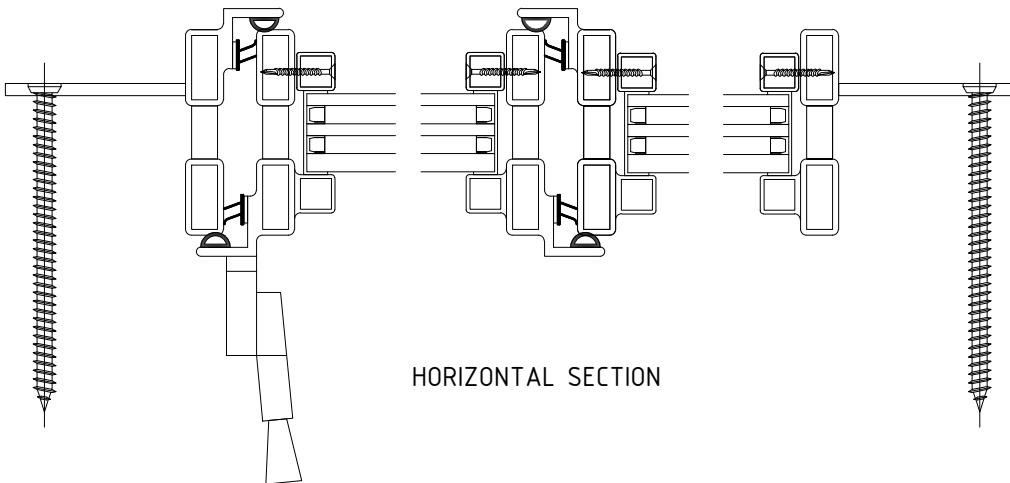
VERTICAL SECTION



HORIZONTAL SECTION



VERTICAL SECTION



HORIZONTAL SECTION