

EuroLite

Steel Doors & Windows

ET68-UE-X

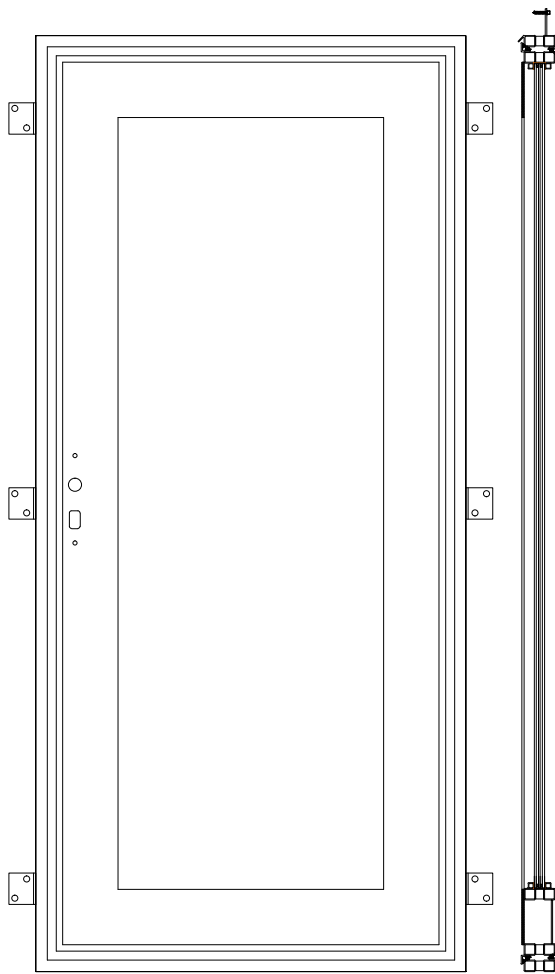
ET68 ENTRY OUTSWING DOOR SINGLE

Locking: TBD
Operation:
Hinges: Welded Steel Barrel
Hinges w Brass Bearing

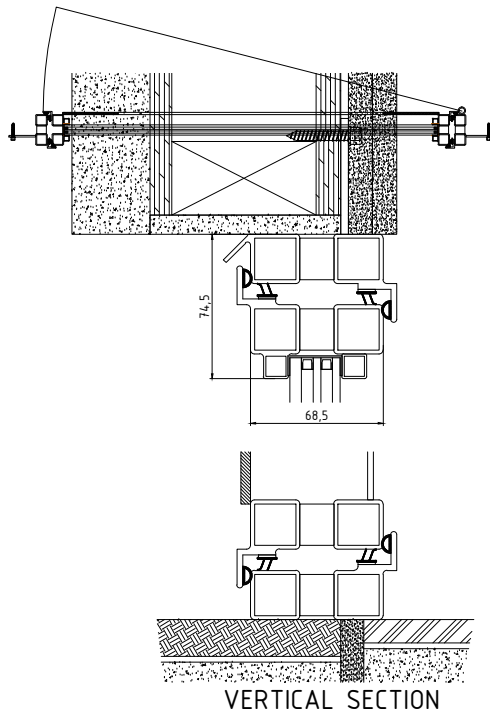
Glazing:
Dual/Triple pane Krypton Gas Filled
Integral Noise Control Included
Low E Options Available
Fully Tempered
Spacer, Black
Factory Installed Wet Glazing w Steel Stop
1/2" and 1" Muntins Available - FDL

Climate Proofing:
Integral Thermal Break
Dual Thermal Seals
Dual Air Seals

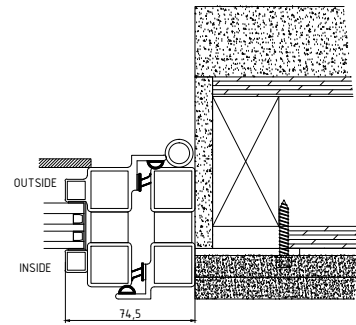
Frame:
Depth: 68 mm
Attachment: Mounting Lug
Finish:
Thermally Bonded Zinc Galvanized
2 Coats Epoxy Primer
3 Coats Acrylic Lacquer
3 Coats Clear Polyurethane



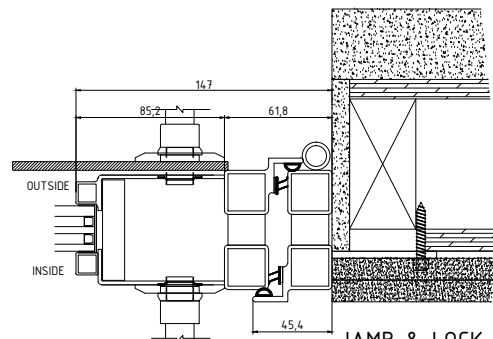
* MUNTINS ARE OPTIONAL



VERTICAL SECTION



JAMB & STILE



JAMB & LOCK BOX